

Est'd 1883

WOODWARDS

140 Years – 5 Generations



FOUNDED 1883 – 5 GENERATIONS OF SUCCESS

Antiques Auction

Antiques, Fine Art,

Collectables, etc.

Saturday 3rd February 2024 at 11am



Joseph **WOODWARD** & Sons, Ltd.

Auction Rooms, 26, Cook Street, Cork.

Katie
www.woodward.ie

€5

JOSEPH WOODWARD & SONS LTD

Founded 1883

WOODWARDS

140 Years – 5 Generations

140 years serving the people of Cork

Antiques, Fine Art & Collectables

Saturday 3rd February 2024 at 11am

On View: Preceding Saturday & Sunday 2pm-4pm, Monday to Friday from 10am to 4pm

Full details and bidding at www.woodward.ie

Live Bidding with



SPECIAL AUCTION –

ANTIQUES & FINE ART

RECENT ESTATES IN MODEL FARM ROAD AND DOUGLAS – 9TH MARCH

ENTRIES CAN BE ACCEPTED FROM FEBRUARY 12TH

Paintings and Sculpture:

When the Forename(s) and Surname of the Artist are given, in our opinion this is a work of the Artist.

When the Initials of the Forename(s) and the Surname of the Artist are given, in our opinion this is a work of the period of the Artist which may be wholly or partly his work.

When the Surname only of the Artist is given, in our opinion this is a work by the school, or by one of the followers of the artist, or in his style and of uncertain date.

Purchasers are allowed seven days from the date of the Auction to satisfy themselves as to the accuracy of the catalogue description.

Please note the Conditions of Sale as displayed in the Auction Rooms.

Estimates given are our opinion at the time and are subject to revision.

Collection of Purchases:

All purchases can be collected from 10am-5pm Monday, Tuesday and Wednesday

or be subject to a daily storage/insurance charge of €15 per day for furniture and €5 per day for other items. Please note – no vehicular access to Cook Street from 11am.

Joseph **WOODWARD** & Sons, Ltd.

26, Cook Street, Cork

Tel: 021-427 3327 email: auctions@woodward.ie

A Family Business since 1883

www.woodward.ie



1. English school 'William Carter seated' mezzotint 50x40cm and 'Portrait of a gentleman' 38x29cm



8. Edmund Caldwell 'Pigs' pair of prints 25x35cm each



2. Archibald Thorburn 'Snipe & Sable Antelope' pair of prints 22x46cm each



9. Archibald Thorburn 'Grouse' two prints 34x54cm & 25x47cm



3. Pair of ornithological prints 'Tringa' & 'Snipe' 22x46cm & 22x47cm



10. Oriental school 'At the court' pair of Oriental watercolours 22x15cm each



4. Assorted lot of pictures, etc. in box



11. 'Spanish pointer' & 'Partridge shooting' pair of prints 38x52cm & 36x48cm



5. Assorted lot of paintings, pictures, etc. in box



12. Pair of ornithological prints 'Circus Cinereous' & 'Rhodostethia Ros-sii' 36x53cm each



6. Assorted lot of paintings, pictures, etc. in box



13. Assorted prints, 'Goat', 'Interior', 'Boars', various sizes



7. 2 prints 'Une Bonne Histoire' & 'Children'



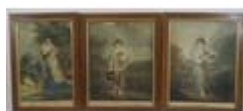
14. Boris O'Klein 'Same story' & 'Old boy' pair of prints 22x27cm each



15. 'Man with dogs' & 'Hunting scene' two prints 40x 60cm & 35x60cm



- 16.** 'Young girl' & 'Lady Hamilton' two prints 43x35cm & 36x28cm



- 23.** English school 'Cottage girl', 'Young cottager', & 'Fetching water' set of three prints 60x40cm each



- 17.** 'Charles Edward', 'Gulls' & 'Shooting scene' three prints of various sizes



- 24.** English school 'Still life study of flowers in a vase' oil on canvas 64x54cm



- 18.** David Lightfoot 'Madonna and Child' pastels 20x20cm signed



- 25.** Greg McDonough 'One stone, like a heart' watercolour 52x50cm, signed and titled verso



- 19.** Pair of ornithological prints 46x32cm each



- 26.** M Larla 'Gougane Barra' oil on board 40x50cm signed



- 20.** William Powell Frith 'Many Happy Returns of the day' coloured print 48x70cm



- 27.** Annabel Playfair 'Lottie' pastels 42x40cm signed & dated



- 21.** Mary Browning 'Tonto and Automatic' pastels 45x60cm signed & dated



- 28.** English school 'Fruit & flowers' Set of five prints 19x14cm each



- 22.** Archibald Thorburn 'Grouse shoot' print 36x58cm studio stamp



- 29.** Peg Quinlan 'Architectural abstracts' a pair of pastels 68x58cm each, signed



30. Robert Wyland
'Sunset' oil on board
24x30cm signed



35. Holgar Pederson
'The Fish Quay' oil
on canvas 64x90cm
signed



30A. Canon EP Mills
'Portrait of Owen
McSweeney' pastels
38x29cm mono-
grammed, dated
1961



36. Victorian school
'Castle by a river'
oil on canvas
50x75cm



31. Victorian needle-
point 'Holy Family'
30x25cm



37. Victorian school
'Portraits of ladies'
pair of oval prints
44x33cm each



31A. Thomas Ryan
PRHA 'Veronica'
pastels, 25x19cm
Titled, signed and
dated Cork 1982



38. Victorian school
'Herding the sheep'
oil on canvas
50x75cm signed in-
distinctly



32. Rowland Davidson
'Stepping outside'
oil on canvas
33x24cm signed



39. Alan Reynolds 'Ve-
netian Scenes' a pair
of oils on canvas
39x60cm each
signed



33. Italian school
'Doges Palace, St
Marks, Venice' oil
on canvas 60x90cm



40. Victorian school
'Portrait of a gentle-
man' oil on canvas
65x55cm



34. Alexander Baxter
(Russia b. 1962)
'Still life study of
Pomegranates' oil
on canvas 45x70
signed & dated
2004



41. George Oak 'Por-
trait of a girl in a
meadow' oil on
board 34x26cm
signed



42. Patricia Good
'Study of a Golden
retriever' pastels
30x24cm signed



- 43.** English school
'Yachting season'
oil on board
44x44cm initialled



- 49.** Irish school 'Still
life study of flow-
ers' oil on board
60x80cm initialled
PB



- 44.** English school
'River scene with
boats' oil on canvas
39x80cm signed



- 50.** Patricia Good 'Still
life study of roses'
watercolour
40x31cm signed



- 44A.** James Priddy FRSA
RBSA (1916-1980)
'Porlock Weir,
Somerset', & 'Wind-
mill, Reigate Heath'
Pair of artists proof
etchings 25x35cm
each signed and
with studio stamps



- 51.** Kevin Simms 'West
of Ireland fishing
village' oil on can-
vas 40x80cm signed



- 45.** Patricia Good
'Landscape with
church spire' &
'Harbour scene' pair
of watercolours
33x44cm each
signed



- 52.** Mary Browning
'Katie' pastels oval
45x35cm signed &
dated



- 53.** George Oak 'Lady
by a pond' oil on
board 28x38cm
signed



- 46.** H Greene 'Wood-
land with dappled
sunlight' oil on
board 24x29cm
signed



- 54.** English school
'Deers in a land-
scape' pair of prints
30x45cm each



- 47.** John Hickin 'Study
of a dog' pastels
23x17cm signed &
dated 1981



- 55.** Cahill O'Connor
'Sunset, Cork Har-
bour' oil on canvas
50x60cm signed



- 48.** Ellen Lefrak 'The
Fiddler' pastels
40x28cm signed



- 56.** Larissa Krill 'Chil-
dren reading' oil on
canvas 140x100cm
initialled



- 57.** Maurice Canning Wilks RUA ARHA (1910-1984) 'The mill at Groenekan, Holland' oil on board, 20x25cm, signed



- 58.** Anthony Vandyke Copley Fielding 'Coastal scene with fisherman walking towards a fishing smack' watercolour 22x32cm signed and dated 1848



- 59.** Anthony Vandyke Copley Fielding 'Coastal Landscape with buildings amongst trees' watercolour 21x27cm signed verso



- 60.** Edwardian oak picnic or card table with folding tapering legs



- 61.** Edwardian oval oak occasional table with wavy border, barleytwist legs & stretchers



- 62.** Victorian stool with foliate upholstered top, on cabriole legs with pad feet



- 63.** Edwardian mahogany three tier round adjustable plate stand with shaped legs



- 64.** Edwardian mahogany display cabinet with domed glazed door, shelved interior, on cabriole legs with pad feet



- 65.** Edwardian style mahogany bookcase with astragal glazed doors, adjustable shelving, on bracket feet



- 66.** Edwardian mahogany side or hall table with frieze drawer, glass shelving, on bracket feet



- 67.** Pair of Edwardian metal ships lanterns, port & star-board, with shaped handles



- 68.** Round chrome cased ships clock with glass front



- 69.** Edwardian style mahogany hall stand with metal rail



- 70.** Edwardian style tall bookcase with dentil frieze, adjustable shelving, on bracket feet



- 71.** Edwardian style pine framed cheval mirror with turned columns, on bracket feet



- 78.** Fine hand woven full pile Afghan Baluch tribal rug with bespoke design 205 x 118cm



- 72.** Ornate cloisonne framed angular wall mirror



- 79.** Edwardian style small mahogany table with frieze drawer, turned columns



- 73.** Lot of kitchenalia, roller, ladle & walking stick



- 80.** Edwardian style tall open bookcase with dentil frieze, adjustable shelving, on bracket feet



- 74.** Edwardian design four tier shelf unit with four drawers, on bracket feet



- 81.** Edwardian design inlaid round occasional table with rope edge border, twist turned column, on tripod



- 75.** Victorian round occasional table with tip up top, turned tapering column with collar, on concave plinth with bun feet



- 82.** Three Oriental style Ironstone plates with bird & foliate decoration, & a Copeland Spode vase



- 76.** Louis XV style marble topped locker or food safe with frieze drawer, metal lined cabinet, ormolu mounts, on turned tapering legs



- 83.** Set of three Royal Doulton Toby jugs with shaped handles



- 77.** A serpentine sided wall hanger with horse decoration



- 84.** Edwardian style waterfall bookcase with adjustable shelving, drawer with drop handle, on bracket feet



- 85.** Mahogany drinks cabinet with serpentine lined interior, mirrored back, two frieze drawers with brass drop handles, on reeded tapering legs with spade feet



- 86.** Georgian style mahogany corner press with domed doors & shelved interior



- 87.** Assorted lot of Imari, Cantonese porcelain, etc



- 88.** Four brass vases, stand, etc



- 89.** Mahogany framed oblong wall mirror with reeded border



- 90.** Edwardian style mahogany press or TV cabinet with panelled doors, drawer under with drop handles, on bracket feet



- 91.** Edwardian style walnut locker with shelved interior, drop handle, on cabriole legs on claw & ball feet



- 92.** Cream ground fine hand woven Persian runner with multi coloured field with diamond medallion design 290 x80cm



- 93.** Victorian style dressing stool with upholstered lift-up top, on carved cabriole legs with pad feet



- 94.** Vintage Minori PII Rokuwa 8mm film editor with hand crank and fitted metal case



- 95.** Edwardian mahogany bookcase with domed pierced pediment, astragal glazed doors with shelved interior, two serpentine drawers with brass drop handles, on tapering legs with spade feet



- 96.** Edwardian inlaid & crossbanded mahogany bureau with drop-down front, pull-out supports, fitted interior, three drawers with brass drop handles, on bracket feet



- 97.** Three round brass pots of graduating sizes with shaped handles



- 98.** Georgian style copper helmet shaped coal scuttle with shaped handle & an oval copper pot



- 99.** Victorian oak round occasional table with tip-up top, raised on vase turned column, on hipped tripod



- 100.** Edwardian style tallboy chest of two short & six long drawers with brass drop handles, on bracket feet



- 101.** Victorian mahogany stool with foliate needlepoint top, cabriole legs with claw on ball feet



- 102.** 'The Paris Aerial' radio tuner



- 103.** Agfa Gevaert tape cutter set in box



- 104.** Edwardian style inlaid & crossbanded mahogany revolving bookcase with railed sides, shell inlay, on quadrapod



- 105.** Victorian mahogany sofa table with drop leaves, pull-out supports, rounded borders, two frieze drawers, raised on turned shaped columns with a stretcher, on bracket feet with brass castors



- 106.** Edwardian oval inlaid & crossbanded two tier serving or occasional table, with shaped columns, on square tapering shaped legs with a shaped stretcher



- 107.** Lot of Davenport 'Longest Day' & 'South Information' commemorative plates, with certificates



- 108.** Lot of British Airways 'Concorde, Legend of the Sky' commemorative plate, mug & ephemera



- 109.** Victorian oak Pembroke table with D-shaped drop leaves, turned columns & stretchers



- 110.** Edwardian style serpentine fronted mahogany bonheur du jour with wavy border, bowed drawers, shaped drawers under, leatherette inset, on tapering legs



- 116.** Georgian inlaid & crossbanded mahogany lowboy desk with rounded corners, three frieze drawers with brass drop handles, shaped apron, on cabriole legs with pad feet



- 111.** Edwardian style Pembroke table with D-shaped drop leaves, twist top, turned column, on quadrapod



- 117.** Blue ground hand woven Afghan Baluch nomadic rug with unique all over floral pattern, wool like silk 190 X 128 cm



- 112.** Pair of French style carved sconces with scroll & shell decoration



- 118.** Art Deco style electric table lamp with shaped panelled shade, baluster column & round base



- 113.** Art Deco style bankers lamp with adjustable green glass tinted shade



- 119.** Edwardian mahogany inlaid library steps with reeded borders & turned legs



- 114.** Edwardian style inlaid occasional or lamp table with raised border, turned reeded column, on hipped tripod



- 120.** Edwardian style pedestal desk with two frieze drawers, six side drawers, teardrop handles, plinths



- 115.** Regency style square library or breakfast table with reeded borders, turned column, on reeded quadrapod with brass cap toes



- 121.** William IV walnut dressing stool with round upholstered adjustable top, turned tapering column, on concave plinth with bun feet



- 122.** French style five branch brass hanging light with vase shaped centre



- 129.** Victorian round lamp or occasional table with raised rim, turned shaped column, on tripod



- 123.** Mahogany cased wall clock with round brass dial & pendulum



- 130.** Edwardian mahogany chest of drawers of graduating sizes, with brass drop handles, on bracket feet



- 124.** Victorian nest of three mahogany glass topped tables with serpentine borders, on carved cabriole legs with claw feet



- 131.** Victorian mahogany davenport with leatherette inset, lift-up lid, sectioned interior, five side drawers with lock, ball turned column, on shaped base



- 125.** Victorian oval inlaid occasional table with tip-up top, ornate satinwood inlay, on turned columns, on foliate carved quadrapod with castors



- 132.** Oriental style carved timber panel with vase & foliate decoration



- 126.** Edwardian style mahogany Pembroke table with drop leaves and gateleg support



- 133.** Large gilt framed bevelled glass wall mirror with foliate & beaded decoration 130x100cm



- 127.** Georgian style copper cauldron with lionmask handles & lionclaw feet



- 134.** Edwardian inlaid mahogany clothes rack with shaped legs



- 128.** Set of three Georgian style copper measures with shaped handles



- 135.** Queen Anne cross-banded mahogany lowboy with three drawers, brass tear drop handles, on cabriole legs with pad feet



- 136.** Edwardian style mahogany occasional table with mirror inset, concave shelf, on square tapering legs



- 137.** Deep ground Iranian runner with all over pattern with hints of pink and surrounding border 295 X 85 cm



- 138.** Victorian copper & brass bed warmer with shaped timber handle



- 139.** Victorian round satinwood occasional or coffee table with cabriole legs on claw & ball feet



- 140.** Georgian mahogany bureau with drop-down front, pull-out supports, interior fitted with drawers & presses, two short & three long drawers under, with brass drop handles, on bracket feet



- 141.** Georgian style mahogany stool with foliate needlepoint upholstery, cabriole legs with scroll feet



- 142.** Edwardian style clothes horse with rails & bracket feet



- 143.** Assorted lot: Danish copper plaque, thermometer, key, recorder, AA badge, military knife, in box



- 144.** Edwardian brass firescreen with bevelled glass insets & bracket feet



- 145.** Victorian rosewood & walnut lowboy with herringbone crossbanding, frieze drawer with ornate brass drop handles, ball turned columns, shaped stretchers, on bun feet



- 146.** Washed red ground Persian Kashqai Nomadic carpet with traditional design 296 X 225 cm



- 147.** Edwardian design Mariners set in fitted presentation case dox



- 148.** Three porcelain busts of musicians & one general



- 149.** Victorian mahogany work or side table with frieze drawer, bun handles, material drawer under, on tapering columns with shaped stretcher & hoof feet



- 155.** Victorian mahogany demi-lune tea table with fold-over top, gateleg support, reeded borders, on turned tapering legs



- 156.** Victorian mahogany hall or side table with two frieze drawers, drop handles, on turned tapering legs with castors



- 150.** Edwardian mahogany desk with pull-out bureau with drop down front and fitted interior, 10 side drawers and central press, on plinth



- 157.** Oriental circular jar with ornate blue and white decoration



- 151.** Edwardian mahogany desk with frieze drawer, side drawers, central press with shelved interior, brass drop handles, on shaped plinth



- 158.** Oriental small vase with blue and white foliate decoration



- 152.** Edwardian style inlaid walnut wheel barometer with thermometer & hygrometer, brass framed dial, by A Maspoli, Hull



- 159.** Regency mahogany two tier corner whatnot with raised gallery, three drawers with brass drop handles, on shaped legs



- 153.** Victorian style metal oil lamp with coloured shade & chimney



- 160.** Regency style mahogany demi-lune hall or side table with rope-edge border, bow fronted drawer with brass drop handle & pierced back plate, on barleytwist legs with claw on ball feet



- 154.** Regency style upholstered stool with ornate scroll foliate carved cabriole legs with claw on ball feet



- 161.** Edwardian style mahogany card table with leatherette inset, fold-over top, gateleg support, on scroll carved cabriole legs with claw on ball feet



- 162.** Model Mariners ships telegraph with handles & round base



- 163.** Ornate Mariners brass compass with adjustable gnomon, stamped West, London



- 165.** French Empire style ebonised card table with fold-over top, brass inlay, 'dog-ear' candle corners, raised on turned reeded tapering legs, with shaped feet H72 85X45(90)



- 166.** Victorian walnut & mahogany work table with inlaid capstan top, section frieze drawer, material drawer under, on baluster turned column, on concave plinth with bun feet



- 167.** Pair of Oriental baluster shaped blue & white scenic decorated bud vases



- 168.** Dresden triple cup ornament decorated with cherubim and flowers



- 169.** Red ground full pile Kashmir carpet with all over Bukhari design 300x200cm



- 170.** Edwardian style round pine centre table with ornate cast iron base with shaped legs



- 171.** Georgian mahogany card table with fold-over top, dog-ear corners, gateleg support, candle stands & counter wells, drawer with brass teardrop handle, on cabriole legs with pad feet



- 172.** Edwardian inlaid mahogany domed bracket clock with acorn finial, shaped top, circular brass framed dial, & lionmask handle



- 173.** Mariners weather station with brass framed clock & barometer by Hanson, London



- 174.** Victorian oblong occasional or side table with rounded borders, raised on turned legs with bun feet



- 175.** Edwardian inlaid mahogany and walnut Grandfather clock with dentil frieze, metal face painted with buildings and foliage, seconds dial and date aperture, signed Harvey, Clonmel, the case with shell, string and satinwood inlay



- 181.** Victorian mahogany table with tip-up top, scalloped borders, foliate carved baluster turned column, on foliate carved tripod with claw on ball feet



- 182.** Art Deco style electric table lamp with shaped column & base, multi-coloured shade



- 176.** Oriental style bamboo effect canterbury with shaped finials & on castors



- 183.** Pair of African tribal art carved face masks



- 177.** Oriental style hanging hall light shade with coloured glass panels



- 178.** Victorian copper & glass table oil lamp with coloured shade & round base



- 184.** Victorian style carved round with foliate & acanthus decoration



- 179.** Pair of Victorian style cast iron campana shaped garden vases with ribbed socles, shaped handles, square stepped tapering bases



- 185.** Edwardian design inlaid & cross-banded mahogany chest of two short & three long drawers with satinwood crossbanding, shell inlay, brass drop handles, on bracket feet



- 180.** Victorian heavy mahogany tea table with fold-over top, gateleg support, crossbanded frieze, on turned tapering legs



- 186.** Ornate cast iron water font with brass tap & foliate decoration



- 187.** Pair of Victorian style round metal skillet pots with shaped handles & legs



- 194.** Victorian style upholstered footstool with cabriole legs



- 188.** Pair of cast iron garden planters with wavy rims, foliate decoration & shaped legs



- 189.** Edwardian two tier oval mahogany occasional table with cabriole legs & shaped stretcher



- 195.** Georgian inlaid & crossbanded walnut chest on stand - chest having two short & three long drawers of graduating sizes, & with three drawers, brass drop handles with ornate pierced brass back plates & es-cutcheons, on baluster turned columns with shaped stretcher & bun feet



- 190.** Edwardian cross-banded mahogany & rosewood tea table with swivel fold-over top, rounded corners, panelled frieze, turned column, on concave plinth with splayed legs, brass cap toes for castors



- 196.** Victorian mahogany hall or side table with side drawer, brass handles, turned tapering legs with castors



- 191.** Large full pile Turkish carpet red ground medallion design with hints of duck egg blue 410 x300cm



- 197.** Edwardian brass postal scales with weights, on oblong base with shaped feet



- 192.** Mariners adjustable telescope with stand, in presentation case



- 198.** Set of six copper pans with shaped brass handles



- 193.** Mariners small gim-balled compass in presentation case



- 199.** Edwardian inlaid mahogany Pembroke table with D-shaped drop leaves, swivel top, gatelegs with stretchers



- 200.** Edwardian inlaid & crossbanded mahogany walnut & satinwood demi lune hall or side table with capstan inlaid top, reeded inlaid frieze, side panels, on reeded tapering legs



- 201.** Pair of Georgian style cast iron garden vases with shaped tops, ram head handles, grapevine decorated ribbons, ribbed socles, on shaped bases



- 202.** Cast iron water font with acorn finial, & stand



- 203.** Ornate cast iron bird bath with shell shaped top & pierced decoration



- 204.** Pair of oval cast iron garden planters with foliate decoration



- 205.** Victorian mahogany chest on stand with ornate brass hinges & escutcheon, shelved interior, two drawers with lionmask handles, carved shell & foliate carved apron, on cabriole legs with claw on ball feet



- 206.** Oblong Victorian style mahogany coffee table with cabriole legs and pad feet



- 207.** South American carved timber tribal figure on square base



- 208.** Terracotta African bust on square base



- 209.** Pair of metal crane figures on shaped bases



- 210.** Victorian walnut card table with serpentine shaped sides, swivel fold-over top, with press under, on ornate foliate carved column, on carved scroll quadrapod with castors



- 211.** Victorian mahogany square occasional table with raised rim, on vase turned column, on hipped tripod



- 217.** Maori figure, club, & a carved statue



- 212.** Pair of cast iron garden planters with foliate decoration



- 218.** Edwardian mahogany tea caddy with lined lid and sectioned interior



- 213.** Ornate cast iron water font with brass tap & shell bowl



- 219.** Edwardian style yew three section canterbury with shaped rails, turned columns, drawer with brass drop handles, on castors



- 214.** Fine hand woven rich red and blue ground Persian Kashan carpet of traditional design 382 x 290cm



- 220.** Victorian walnut card table with serpentine shaped sides, swivel fold-over top, hexagonal baluster column, on scroll carved quadrapod with castors



- 215.** Georgian inlaid & crossbanded mahogany chest on chest with dentil frieze, banded drawers with brass drop handles & pierced escutcheons, pull-out shelf, on bracket feet



- 221.** Edwardian inlaid & crossbanded mahogany demi lune hall or side table with herringbone & string inlay, on tapering legs



- 216.** William IV inlaid & crossbanded mahogany kneehole desk with ornate foliate inlay, brass teardrop handles, frieze drawer, six side drawers, on bracket feet



- 222.** Art Deco style carved onyx figure of a lady



- 223.** Inuit carved marble figure



- 224.** Victorian mahogany hexagonal occasional table with tip-up top, vase turned column, on hipped tripod



- 230.** Georgian walnut and crossbanded rosewood card table with fold-over top, pull-out gateleg supports, inlaid frieze, on turned tapering legs



- 225.** Edwardian Sheraton inlaid breakfront credenza with ornate foliate & string inlay, ormolu mounts, panelled door, with shelved interior, glazed sides, on shaped plinths



- 231.** Brass framed hanging wall light with shaped sconces & bevelled panels



- 232.** Edwardian brass fire kerb with barleytwist rails



- 226.** Edwardian inlaid & crossbanded mahogany quartetto nest of tables with raised rims, spindle turned legs, on bracket feet with stretchers



- 233.** Three-piece heavy brass companion set with ball shaped tops



- 227.** Edwardian style mahogany snooker score board with shaped top



- 234.** Edwardian demi-lune brass umbrella & stick stand with shaped finials & tray



- 228.** Edwardian style inlaid walnut weather station with domed top, brass framed enamel dials and thermometer, inscribed presentation plaque



- 235.** Victorian mahogany display cabinet with ornate scroll decorated back, shaped bevelled mirror insets, glazed door with lined interior, shelving, side presses, brass drop handles, on cabriole legs



- 229.** Georgian mahogany stool with wavy apron, cabriole legs with claw on ball feet



- 236.** Victorian oval occasional table with tip-up top, turned column, on hipped tripod



- 237.** Art Deco electric table lamp with shaped base, ornate multi-coloured shade



- 242.** Oriental hexagonal shaped brass teapot of hexagonal tapering form, with sliding shelf, shaped handle, spout, ornate brass decoration & panels



- 243.** Mariner's hand held folding compass, stamped Stanley, London



- 238.** Timber recorder with brass thumbpiece



- 244.** Victorian walnut locker with concave front, drop leaves, shaped drawer with press under, drop handles, on cabriole legs



- 239.** Large multi coloured field Persian Tabriz carpet with rich colours on a floral field 380x290cm



- 245.** Edwardian inlaid & crossbanded mahogany chest of two short & three long drawers with reeded borders & sides, bun handles, on bracket feet



- 240.** Edwardian inlaid satinwood and walnut hall or side table with serpentine shaped top, double shaped frieze drawers, shell decorated knuckles, on shaped cabriole legs



- 246.** Victorian style mahogany framed domed swivel mirror with tapering columns & shaped legs



- 241.** Edwardian mahogany Pembroke table with drop leaves, pull-out supports, frieze drawer with bun handle, hexagonal column, on concave plinth with shaped feet



- 247.** Dutch Delft figure of a cat with blue & white decoration



- 248.** Pair of Oriental style willow pattern round dishes with ornate scenic blue & white decoration



- 249.** Imari centrepiece bowl with wavy rim, ornate blue & white & deep ochre decoration, on round base



- 250.** Victorian mahogany two section economy dining table with two extra leaves, with rounded corners, on turned tapering legs with castors



- 251.** Victorian inlaid & crossbanded mahogany & rosewood occasional or work table with lift-up lift, sectioned interior, on turned tapering legs with turned stretchers & castors



- 252.** Pair of Windsor artware ebonised flower vases by Gibson & Sons, Burslem, England, with parakeets & foliate decoration



- 253.** Oval Rosenthal Art Deco style bowl with shaped feet



- 254.** Victorian style walnut nest of three tables with raised wavy borders & cabriole legs with pad feet



- 255.** Edwardian mahogany breakfront bookcase with dentil frieze, astragal glazed doors with shelved interior, four frieze drawers with round brass drop handles, panelling under, with central drawers & side presses, on breakfront plinth



- 256.** Victorian porcelain Toby jug 'Harty Goodfellow' with shaped base



- 257.** Pair of Royal Doulton figures 'The Balloon sellers' on shaped bases



- 258.** Royal Doulton figure 'Silks & Ribbons' with shaped base



- 259.** Royal Doulton figure 'The Pied Piper' with shaped base



- 260.** Victorian mahogany round centre table with tip-up top, turned column, on hipped tripod



- 268.** Edwardian style Mariners brass extending telescope with leather mount



- 261.** William IV walnut hexagonal shaped sewing or work table with lift-up lid, fitted interior, material drawer, on shaped column, on carved tripod with scroll feet



- 269.** Georgian style oval peat bucket with brass banding & shaped handles



- 262.** Waterford Crystal cut glass baluster shaped decanter with diamond decoration & stopper



- 270.** Edwardian mahogany hexagonal shaped tea table with fold-over top, pull-out gateleg support, angled corners, on tapering legs



- 264.** Five piece cast iron garden or patio suite, round table & four chairs with figured and foliate decoration and shaped legs



- 271.** Art Deco style electric table lamp with shaped column & round base, multi-coloured glass shade



- 265.** Victorian style four tier whatnot with turned finials and columns, drawer under with bun handles, on castors



- 272.** Waterford Crystal desk clock with round brass framed dial



- 266.** Cream ground full pile fine woven Turkish rug of floral medallion design 150 x 100 cm



- 273.** Galway Crystal cut glass sweet basket. H20cm



- 267.** Edwardian style Mariners compass & telescope in fitted presentation case



- 274.** Waterford Crystal cut glass sauce boat with shaped handle



- 275.** Seven piece cast iron garden or patio suite - round table & six chairs with ornate foliate decoration



- 276.** Pair of duck egg ground full pile Kashmir rugs of floral all over design



- 277.** Art Deco style group of lovers on shaped base



- 278.** Ornate bronzed ornament of a reclining nude, on shaped base



- 279.** Vintage brass & metal hand bell with timber handle



- 280.** Victorian mahogany round occasional table with tip-up top, baluster turned column, on hipped tripod



- 281.** Art Deco carved wine rack



- 282.** Aboriginal carved timber small canoe decorated with alligators, 40x80cm



- 283.** Tribal art woven coloured mask



- 284.** Pair of cast iron garden lamp holders with angled sides



- 285.** Edwardian mahogany chest of two short & three long drawers, with brass drop handles & back plates, on bracket feet



- 286.** Edwardian mahogany corner wall display cabinet with angled top, glazed door, with shelved interior



- 287.** Cast iron post box with door



- 288.** Round Belleek electric lamp with foliate decoration



- 289.** Cork, Blackrock & Passage metal square railway sign



- 290.** Victorian mahogany three tier dumbwaiter with railed back, foliate carving, on scroll feet



- 291.** Edwardian inlaid mahogany & rosewood work table with serpentine sides, mirrored lift-up lid, sectioned interior, drawer under with brass drop handles, on square legs with shaped lower shelf



- 292.** Vintage old stone carved statue of St Peter with Keys to Heaven, on shaped base 70cm



- 293.** Oriental metal figure of a man holding a vase, on shaped base



- 294.** Victorian style Parian figure of a lady on round base, with a smaller figure of a lady



- 295.** Louis XV style es-critoire with shaped upper frieze drawer, drop-down front with leatherette inset, fitted interior, three drawers under, on bracket feet



- 296.** Pair of cast iron tractor seats mounted as stools with swivel tops



- 297.** "Mick McQuaid" advertising figure on base



- 299.** Set of 4 'Red Arrow' limited edition collectors plates framed as one



- 300.** William IV rosewood teapoy with sarcophagus shaped top, fitted & lined interior, raised on ornate foliate carved baluster reeded column with foliate collar, on concave plinth, with foliate upturned feet on castors



- 301.** Large canteen of Kings pattern silverplated cutlery in fitted canteen



- 302.** Canteen of silverplated cutlery with shaped handles



- 303.** Schatz brass cased German carriage clock with shaped handle



- 304.** Leather cased folding travel clock with brass frame dial



- 324.** Ornate cast iron "Gothic style" garden seat with honeysuckle decoration



- 305.** Edwardian brass Jewellery scales in fitted presentation box



- 325.** Ornate cast iron garden seat decorated with birds, figure & foliage



- 319.** Victorian mahogany ladies chair with pierced carved decoration, foliate upholstery, on turned legs



- 326.** Victorian style mahogany occasional chair with pierced wheatsheaf splat, foliate upholstered seat, on cabriole legs with claw on ball feet



- 320.** Set of six Chippendale style dining chairs with pierced wheatsheaf splats, drop-in seats, on scroll carved cabriole legs, with claw on ball feet



- 327.** Georgian style low bedroom or occasional chair with pierced splat and square legs with stretchers



- 321.** Edwardian inlaid mahogany tub armchair with shaped arms & backs, inlaid rails, serpentine fronted seat, on square tapering legs with spade feet



- 328.** Victorian oblong stool with foliate upholstery, cabriole legs with pad feet



- 322.** Four piece cane & rattan conservatory or patio suite with serpentine backs, shaped legs, & table with marble inset



- 329.** Georgian ladder back open armchair with pierced rails, shaped arms, square legs with stretchers



- 323.** Oriental style ebonised occasional chair with ornate bird & foliate decoration, cane seat, shaped legs



- 330.** Victorian walnut ladies chair with domed back, foliate carving & upholstery, serpentine fronted seat, on cabriole legs

Conditions of Sale:

1. The highest bidder for each lot shall be the purchaser. Should a dispute arise the Auctioneer shall at his discretion put the lot in dispute up for sale again or withdraw same from sale or declare the purchaser thereof.

2. The Auctioneers reserve for themselves the right to bid on behalf of the vendors and to reject or refuse to accept any bid without giving any reason therefor. The bidding shall be regulated by the Auctioneers and no bidding shall be retracted.

3. The price at which the bidder purchases each lot will be exclusive of V.A.T. and premium.

4. If required by the Auctioneer, the purchaser of each lot shall give his name and address to the Auctioneers representative and shall also immediately pay a cash deposit of 25% of the purchase money (or such sum as the Auctioneer may stipulate). The balance of the purchase money together with V.A.T. (if applicable), Auctioneers commission at the rate of 23% of the full purchase price plus V.A.T. at the prevailing rate shall be paid on the day of the sale, and if not so paid the Auctioneers reserve the right to charge interest on any unpaid balance at the rate of 18% per annum until payment is made.

5. Each purchaser's sale account must be paid in full before the removal of any lot.

6. Purchasers will be required to pay either in cash or by bankers draft. There is a service charge of 2% for credit cards.

7. The Auctioneers reserve the right to alter, divide, group or withdraw any lots either before or at any time during the sale.

8. The vendors or their agent reserve to themselves the right of repurchasing any lot, or part lot, at the knocked down price, or proportion of such price, where it is found necessary to let that lot, or part lot, remain and the decision of the Auctioneers respecting same shall be final and binding on all parties.

9. Each purchaser shall be deemed to have inspected and to be thoroughly acquainted with the contents and conditions of the lot or lots purchased and to have purchased same subject to all faults, deficiencies, imperfections, and errors (if any) of any description therein, and no allowance whatsoever shall be made in respect of any difficulty of access.

10. The description, measurements and numbers set out in the catalogue are believed to be correct but no guarantee or warranty is given or is to be implied as to the correctness of such descriptions, or the genuineness or authenticity of any lot or its fitness for any particular purpose.

11. Each lot shall, from the fall of the hammer, be at the sole risk of the purchaser and must be cleared and taken away, without fail, at the purchasers expense, in such order as the Auctioneers or their representative shall direct not later than 5.00 p.m. on the Friday following the sale, after which time any lot or lots remaining on the premises shall be liable for rent and expenses, storage and insurance charges, and will also be liable to be removed from the premises and left outside at the purchasers risk in all respects.

12. The purchaser will be responsible for all damage that it, its carriers, servants, or agents may do to the property of any third (and in particular to the vendors premises) in removing the lot(s).

13. If within seven days after the sale the Auctioneers have received notice in writing from the purchaser that a lot is not as described in the catalogue and this notice can be substantiated

with evidence, the burden of proof to be upon the purchasers, then the Auctioneers at their discretion may rescind the sale and return the purchase price.

14. No liability will be accepted by the vendors or the Auctioneers for personal injuries of any description and from whatsoever cause arising, sustained by any person whilst on the property of the vendors for the purpose of inspection, or during the sale, or whilst removing any lots, or on the premises in connection with the sale.

15. Each purchaser shall be responsible for and will release and indemnify the vendors, their servants and agents, from and against all liability in relation to each lot or lots sold or otherwise.

16. Each purchaser shall provide all vehicles, equipment and labour necessary for the removal of purchases.

17. If the purchaser shall make default in payment of his purchase money or neglect to comply with these conditions, or any of them, all money paid by him or his agent at the time of sale shall be forfeited to the vendors who shall be at liberty to re-sell the lot or lots at such time or times as they may think proper and without notice to the party or parties making default or neglecting to comply with these conditions, and in case of non-payment thereof the same shall be recoverable as and for liquidated damages. Any surplus arising on such re-sales shall belong solely to the vendors. This condition shall not prejudice the vendors or Auctioneers right to enforce the contract made at this present sale.

18. Neither the vendors or the Auctioneers will hold themselves responsible for any lots while on the premises. No lots may be collected outside the dates and hours set out nor will the Auctioneers transfer lots from one buyer to another.

19. The vendors, their servants or agents shall not be liable for any loss, damage or injury occasioned to any purchaser, the purchasers servants or agents, or to any person or any property which may be caused by any defects, imperfection or malfunction in any lot or lots or contamination caused by same.

20. If any dispute or difference arises concerning any lot or the interpretation of these conditions, the same shall be settled by the Auctioneers whose decision shall be final and binding on all parties concerned.

Est'd 1883

WOODWARDS

140 Years – 5 Generations



Successful sales since 1883

We're selling property. Are you ?

We are experiencing strong demand for family homes throughout Cork City and beyond. If you are contemplating selling, talk to us. We have the knowledge gained over 3 centuries and 5 generations of experience that you will not get elsewhere.

Or new website **www.HomeMatch.ie** is our database listing the detailed requirements of hundreds of potential buyers. If you are looking, log in to www.homematch.ie and let us know what you are looking for.

If you are selling, let us make a match with a potential buyer.

We are the First Irish auctioneers on the Internet and receive up to 30,000 visitors per month. Check us out at WWW.WOODWARD.IE

Monthly Auctions of Antiques, Fine Art, Silver, Porcelain, and quality house contents
Held in our City Centre Auction Rooms in Cook Street and in Period Properties throughout Munster.

Free inspection and appraisal in our offices Monday - Friday.

The Full Service

from start to finish includes:

Removal of saleable items to our auction rooms

Clearance and preparation of property including skips, garden, etc.

Marketing, advertising and internet,

Viewing and negotiation,

Sale, and monitoring of all stages up to contract and close.

**We are the longest established family firm of Auctioneers in Cork
with a hard earned reputation for integrity and results.
Call us for free advice on how to achieve the maximum price for your
property**

Successful sales since 1883

Joseph *WOODWARD* & Sons, Ltd.

26, Cook Street, Cork

www.woodward.ie